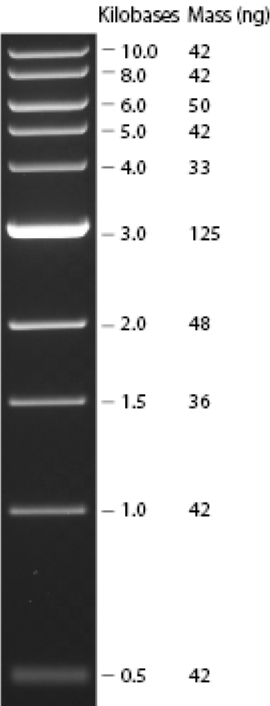


**Description:**

A number of proprietary plasmids are digested to completion with appropriate restriction enzymes to yield 10 bands suitable for use as molecular weight standards for agarose gel electrophoresis. The digested DNA includes fragments ranging from 0.5-10.0 kilobases (kb). The 3.0 kb fragment has increased intensity to serve as a reference band. The approximate mass of DNA in each of the bands is provided (assuming a 0.5 µg load) for approximating the mass of DNA in comparably intense samples of similar size.

---



1 kb DNA Ladder visualized by ethidium bromide staining on a 0.8% TAE agarose gel. Mass values are for 0.5 µg/lane.

---

**Effective Size Range:** 500 bp to 10 kb

**Source:**

The double-stranded DNA is digested to completion with appropriate restriction enzymes, phenol extracted and equilibrated to 10 mM Tris-HCl (pH 8.0) and 1 mM EDTA.