

[PRODUCTS](#)[TECHNICAL REFERENCE](#)[CUSTOMER SERVICE](#)[MY NEB ACCOUNT](#)[search](#)[go >>](#)[CONTACT NEB](#)[ABOUT US](#)[SITE MAP](#)[LITERATURE REQUEST](#)[OEM](#)[ISO](#)[INTERNATIONAL](#)[FREEZER PROGRAM](#)[QUICK ORDER](#)**RELATED INFORMATION**

- ▶ [Protocols for Protein Marker, Broad Range \(2-212 kDa\)](#)
- ▶ [FAQs for Markers and Ladders \(DNA/RNA/Protein\)](#)
- ▶ [Technical Reference for Markers and Ladders \(DNA/RNA/Protein\)](#)

FAVORITE TOOLS

- ▶ [Enzyme Finder](#)
- ▶ [NEBcutter](#)
- ▶ [NEBuffer Chart](#)
- ▶ [Double Digest Finder](#)
- ▶ [Isoschizomers](#)
- ▶ [DNA Sequences and Maps](#)
- ▶ [PCR Selection](#)
- ▶ [Tm Calculator](#)
- ▶ [REBASE](#)

RELATED PRODUCTS**Companion Products**

- ▶ [ColorPlus Prestained Protein Marker, Broad Range \(7-175 kDa\)](#)
- ▶ [Prestained Protein Marker, Broad Range \(7-175 kDa\)](#)

SPECIAL OFFERS

[Home](#) > [Products](#) > [Markers and Ladders \(DNA/RNA/Protein\)](#) > [Protein Markers and Ladders](#) > [Protein Marker, Broad Range \(2-212 kDa\)](#)

Protein Marker, Broad Range (2-212 kDa)

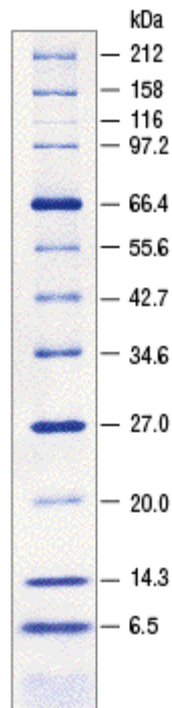
Catalog #	Size	Concentration	Price	Qty
P7702L	750 mini-gel lanes		\$280.00	ADD TO CART
P7702S	150 mini-gel lanes		\$70.00	ADD TO CART

Prices are in US dollars and valid only for US orders.

Download: [MSDS PDF](#)

Description:

Protein Marker, Broad Range is a mixture of purified proteins with known amino acid sequences. They are resolved to 13 sharp bands when analyzed by SDS-PAGE (Tris-Glycine) and stained with Coomassie Blue R-250 (1). Two bands (BSA, MW 66.4 kDa and Triosephosphate isomerase, MW 26.6 kDa) are at double intensity to serve as reference points.



10-20% SDS-PAGE

Insulin chains are unresolved by SDS-PAGE (Tris-Glycine).

Effective Size Range: 2 kDa to 212 kDa

Protein	Source	Molecular Weight (daltons)
Myosin	rabbit muscle	212,000
MBP- β -galactosidase	<i>E. coli</i>	158,194
β -Galactosidase	<i>E. coli</i>	116,351

Phosphorylase b	rabbit muscle	97,184
Serum albumin	bovine	66,409
Glutamic dehydrogenase	bovine liver	55,561
MBP2*	<i>E. coli</i>	42,710
Thioredoxin reductase	<i>E. coli</i>	34,622
Triosephosphate isomerase	<i>E. coli</i>	26,972
Trypsin inhibitor	soybean	20,100
Lysozyme	chicken egg white	14,313
Aprotinin	bovine lung	6,517
Insulin A	bovine pancreas	3,400
B chain	bovine pancreas	2,340

Concentration: 0.1 mg/ml to 0.2 mg/ml

Recommended Load: 6 μ l

Storage Conditions

Storage Conditions:

70 mM Tris-HCl

33 mM NaCl

40 mM Dithiothreitol

1 mM EDTA

10% Glycerol

0.01% Bromophenol Blue

2% SDS (w/v)

pH 6.8 @ 25°C

Storage Temperature:

-20°C

Notes

General notes:

1. MBP2* = maltose-binding protein. MBP- β -galactosidase = fusion of MBP and β -galactosidase.
2. Trypsin inhibitor (soybean) is a mixture of three isoforms: A-20,094 Da; B-20,040 Da; C-20,167 Da. These isoforms migrate as one unresolved band using Tris-Glycine gels and as a doublet using Tris-Tricine gel. [Schagger, H. and Von Jagow, G. (1987) *Anal. Biochem.* 166, 368-379].
3. Apparent molecular weights of every lot are determined on 10-20% gradient gels using NEB's Protein Ladder (NEB #P7703).

Protocols

[Protocols for Protein Marker, Broad Range \(2-212 kDa\)](#)

References

1. Laemmli, U.K. (1970) *Nature*, 227, 680.
2. Sambrook, J., Fritsch, E.F. and Maniatis, T. (1989) *Molecular Cloning: A Laboratory Manual*, (2nd ed.), X.

Companion Products

[ColorPlus Prestained Protein Marker, Broad Range \(7-175 kDa\)](#)

[Prestained Protein Marker, Broad Range \(7-175 kDa\)](#)